



ENCLOSED HOSE REELS

Oil and similar **150 bar**



FIXED S. 450



SWIVELLING S. 440

Hose reel with hoses in black synthetic rubber and galvanised steel fittings

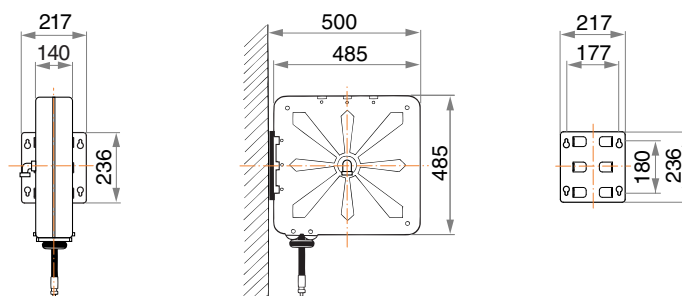
- carbon steel swivel joint
- "polyurethane" seals



Article	Hose length	Hose ϕ	Connection inlet	Connection outlet
8450.400	/	without hose	F 1/2"G	F 1/2"G
8450.401	10m (996.310)	1/2"	F 1/2"G	M 1/2"G
8450.402	15m (996.315)	1/2"	F 1/2"G	M 1/2"G

No. 1 packing m^3 0,085 from kg 21 to 29

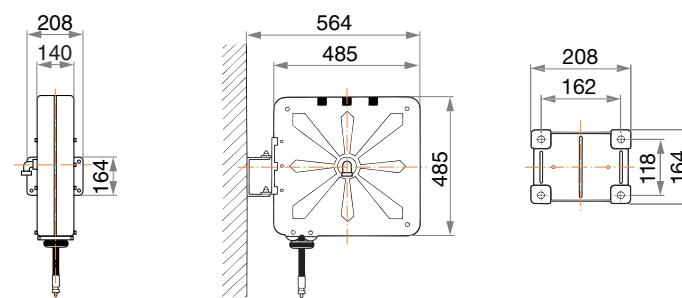
OVERALL DIMENSIONS



Article	Hose length	Hose ϕ	Connection inlet	Connection outlet
8440.400	/	without hose	F 1/2"G	F 1/2"G
8440.401	10m (996.310)	1/2"	F 1/2"G	M 1/2"G
8440.402	15m (996.315)	1/2"	F 1/2"G	M 1/2"G

No. 1 packing m^3 0,085 from kg 22 to 30

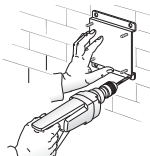
OVERALL DIMENSIONS



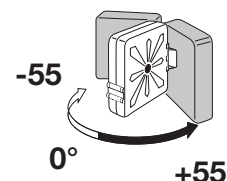
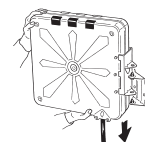
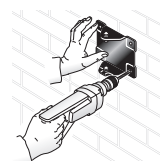
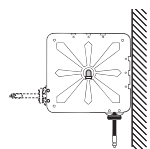
The **template** supplied, facilitates drilling of the holes and therefore hose reel fixing.



The **quick coupling** support (see page 394) that facilitates installation in battery is available by request.



The **fixed hose reel** installation system can be easily modified according to needs (see instructions on page 396).



The **quick coupling** adjustable support facilitates hose reel installation and enables 55° rotation to the right or left or locking in fixed positioned at 0° by means of clamping with two screws.

The **swivelling hose reel** installation system can be easily modified according to needs (see instructions on page 396).

