



ENCLOSED HOSE REELS

Air - Water **20** bar



FIXED S. 450



SWIVELLING S. 440

Hose reel with hoses in black synthetic rubber and galvanised steel fittings

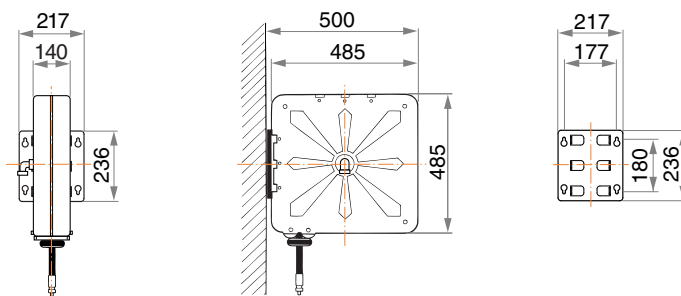
- brass swivel joint
- "viton" seals



Article	Hose length	Hose ø	Connection inlet	Connection outlet
8450.100	/	without hose	F 1/2"G	F 1/2"G
8450.101	12m (995.212)	3/8"	F 1/2"G	M 3/8"G
8450.102	18m (995.218)	3/8"	F 1/2"G	M 3/8"G
8450.103	10m (996.210)	1/2"	F 1/2"G	M 1/2"G
8450.104	15m (996.215)	1/2"	F 1/2"G	M 1/2"G

No. 1 packing m^3 0,085 from kg 21 to 29

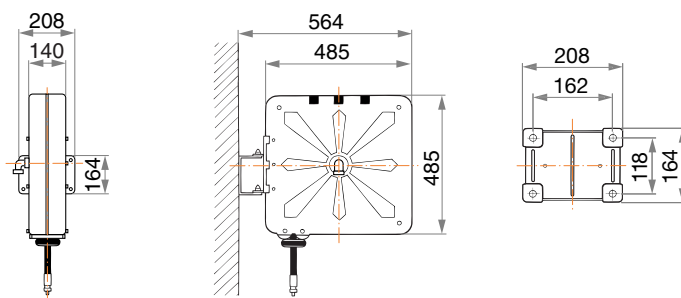
OVERALL DIMENSIONS



8440.100	/	without hose	F 1/2"G	F 1/2"G
8440.101	12m (995.212)	3/8"	F 1/2"G	M 3/8"G
8440.102	18m (995.218)	3/8"	F 1/2"G	M 3/8"G
8440.103	10m (996.210)	1/2"	F 1/2"G	M 1/2"G
8440.104	15m (996.215)	1/2"	F 1/2"G	M 1/2"G

No. 1 packing m^3 0,085 from kg 22 to 30

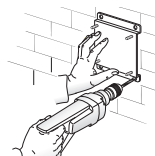
OVERALL DIMENSIONS



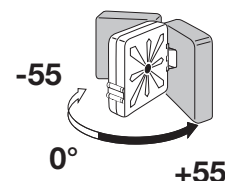
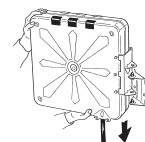
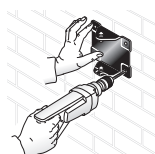
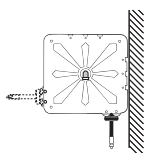
The **template** supplied, facilitates drilling of the holes and therefore hose reel fixing.



The **quick coupling support** (see page 394) that facilitates installation in battery is available by request.



The **fixed hose reel** installation system can be easily modified according to needs (see instructions on page 396).



The **quick coupling adjustable** support facilitates hose reel installation and enables 55° rotation to the right or left or locking in fixed positioned at 0° by means of clamping with two screws

The **swivelling hose reel** installation system can be easily modified according to needs (see instructions on page 396)

