

## ELECTRIC DRUM AND TANK PUMP - M703CP x 3 SERIES

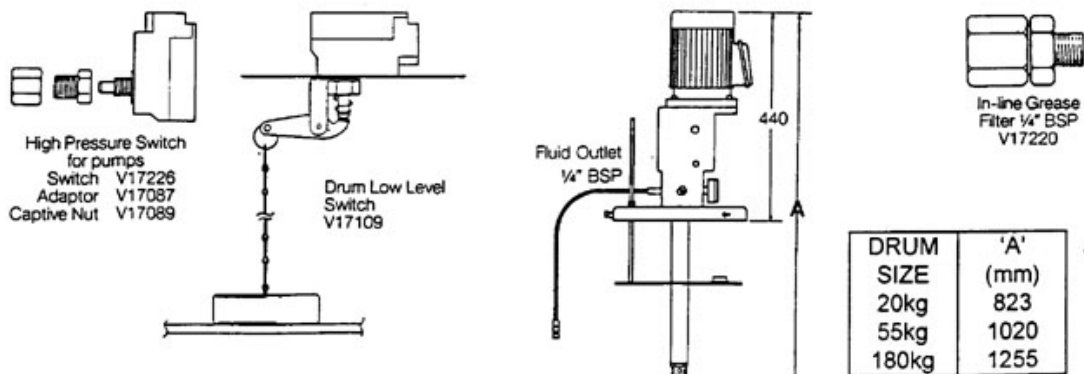
SPECIFICATION & DIAGRAM

### ELECTRIC PUMP M703CP x 3 SERIES OIL AND GREASE DISPENSING

APPLICATIONS:	Automatic lubrication systems in quarrying, mining and industrial applications.
SUITABLE FOR PUMPING:	Oil of minimum viscosity 100c.st Grease up to and including NLG1 grade 2
ADAPTABLE TO SUIT:	20kg, 55kg and 180kg grease drums. 60 litre and 205 litre oil drums. Oil and grease tanks.
FLOW RATE:	150cc/minute
MAX. PRESSURE:	21000 kPa (3000 PSI)
OUTLET PORT:	¼" BSP female
MANUFACTURED BY:	Tecalemit (Australasia) Pty Ltd.
PACKAGE SIZE	137 X 27 X 24cm
MASS:	31kg

MOTOR SPECIFICATION			
MAKE	Teco	POSITION	Vertical
RPM	1400	FRAME SIZE	D71
KW	0.37	POLE	4
HZ	50	MOUNT	Flange
VOLTAGE	415	SHAFT OIL SEAL	Yes
PHASE	3	IP RATING	55

Available in 240V and other options upon request.



## ELECTRIC DRUM AND TANK PUMP - M703CP x 3 SERIES

PARTS LIST

PART NUMBER	DESCRIPTION	QTY
<b>180KG ELECTRIC GREASE DRUM PUMP ASSEMBLY</b>		
MLS.CPX3.3	Bare pump with drum cover , follower, hose, mounting set screws and spring washers.	1
M703CPx3.3	Bare pump	1
V17096	Drum cover	1
BK8151	Follower plate assy.	1
V17105	Hose assy. 2 metes long ¼ BSP male / ¼ BSP female	1
SWA1105.6	Set screw 5/16 BSW x ¾	4
28463.7	Spring washer 5/16 plus accessories	4
<b>180KG ELECTRIC GREASE DRUM PUMP AND ACCESSORIES</b>		
V17243	Assembly. Bare pump with drum cover follower hose mounting set screws, spring washers, nipple, inline filter, low level switch, nut, adaptor and switch.	1
MLS.CPx3.3	Pump Assy.	1
4346.3	¼ BSP male nipple	1
V17220	Filter ¼ BSP in line	1
V17109	Low level switch assy.	1
V17089	Nut (for V17226)	1
V17087	Adaptor bush (for V17226)	1
V17226	High pressure limit switch	1
<b>55KG ELECTRIC GREASE DRUM PUMP ASSEMBLY</b>		
MLS.CPX3.2	Bare pump with drum cover , follower, hose, mounting set screws and spring washers.	1
M703CPx3.2	Bare pump	1
V17091	Drum cover	1
BK8150	Follower plate assy.	1
V17105	Hose assembly 2m long	1
	¼ BSP male/female	
SWA1105.0	Set screw 5/16BSWx3/4	4
28463.7	Spring washer 5/16	4
<b>20KG ELECTRIC GREASE DRUM PUMP ASSEMBLY</b>		
MLS.CPX3.1	Bare pump with drum cover , follower, hose, mounting set screws and spring washers.	1
M703CPx3.1	Bare pump	1
V17229	Drum cover	1
V5412.3	Follow plate assy.	1
V17105	Hose assy. 2m long ¼ BSP m/female	1
SWA1105.6	Set screw 5/16 BSW x ¾	4
28463.7	Spring washer 5/16	4

**ELECTRIC DRUM AND TANK PUMP - M703CP x 3 SERIES**

PARTS LIST CONTINUED

PART NUMBER	DESCRIPTION	QTY
<b>ELECTRIP PUMP ACCESSORIES</b>		
V17220	Filter ¼ BSP inline	1
M10296	Filter element for V17220	1
TF150	Filter ¼ BSP heavy duty with side removable element	1
TF150c	Filter element 150 micron for TF150	1
1113205	Filter element 300 micron for TF150	
V17226	High pressure limit switch	1
V17089	Nut (for V17226)	1
V17087	Adaptor bush (for V17226)	1
V17109	Drum low level switch	1
V1368	2" BSP male oil drum with slotted adaptor	1
V1368B	2" BSP male adaptor for internal "O" ring seal used on tank sealing applications	1
BK8159	"o" Ring to suit V1368B	1
M5019	Pressure gauge (spare)	1
<b>ELECTRIC PUMP REPAIR KIT</b>		
<b>MODEL M703CPx3.1-3</b>		
V17486	Seal pump rod	2
M10113	Upper seal body "O" ring	2
M1029	Upper seal body backup washer	2
M2503	High pressure piston valve spring	1
163922.7	High pressure piston 0.25 dia ball	1
M10200	Aluminum washer	2
M10223	Pump body	1
M10222	High pressure piston	1
V18201	Fluid seal	1
163922.19	Foot valve 0.625 dia ball	1
BK8237	Foot valve follower tube "O" ring seal	1

PK Electric Pump