



Ratio **1:1**
Capacity **23 l/min**



Art. 33060

Art. 33061



Art. 33094

Art. 33096

Air-operated transfer pumps 23 l/min suitable for transferring **low-viscosity** (density) liquids such as oil, depleted oil, antifreeze liquid and allied products, **at short and medium distances**.

They are equipped with special Teflon seals.

Art. 33060 **Transfer pump 23 l/min** Ratio 1:1 for wall mounting (or fixed) **see page 66**

N° 1 packing m^3 0,006 kg 4,3

Art. 33061 **Extensible pump 23 l/min** Ratio 1:1 complete with foot valve with filter **KR3308** applicable to the personalized suction tube. **see page 66**

N° 1 packing m^3 0,006 kg 5

Art. 33094 **Transfer pump 23 l/min** Ratio 1:1 for 180/220 kg trade drums

N° 1 packing m^3 0,020 kg 6,3

Art. 33096 **Transfer pump 23 l/min** Ratio 1:1 for 180/220 kg trade drums with pump bung adaptor (art. 38042)

N° 1 packing m^3 0,020 kg 6,4

We recommend applying delivery hoses of min. 1/2", optimal 3/4".

N.B. The eventual application of a meter art.37701-37702-37711-37722 reduces the pump capacity to 13/15 litres max.

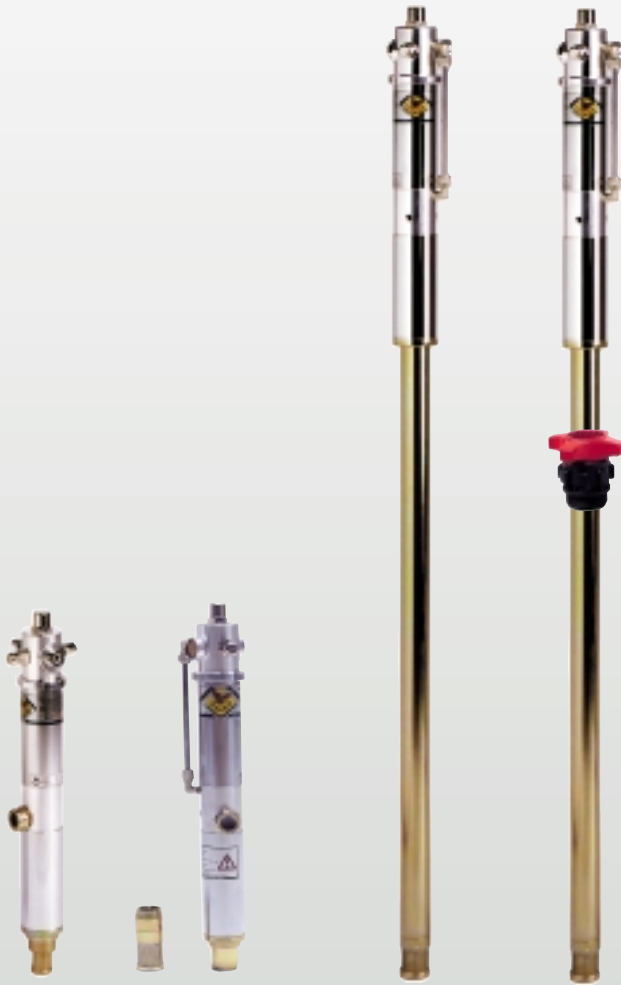
These pumps can only be coupled with meter 33701.

WARNING: Do not use flammable or corrosive liquids.

| Article | 33060 | 33061 | 33094 33096 | 33160 | 33161 | 33194 33196 |
|--|--------------|------------|----------------|--------------|------------|----------------|
| Compression ratio | 1:1 | 1:1 | 1:1 | 1:1 | 1:1 | 1:1 |
| Air inlet connection | F 1/4" G. | F 1/4" G. | F 1/4" G. | F 1/4" G. | F 1/4" G. | F 1/4" G. |
| Oil outlet connection | F 1/2" G. | F 1/2" G. | F 1/2" G. | F 3/4" G. | F 3/4" G. | F 3/4" G. |
| Working pressure | 6 - 8 bar | 6 - 8 bar | 6 - 8 bar | 6 - 8 bar | 6 - 8 bar | 6 - 8 bar |
| Max. pressure | 8 bar | 8 bar | 8 bar | 8 bar | 8 bar | 8 bar |
| Air consumption | 230 lt/min | 230 lt/min | 230 lt/min | 270 lt/min | 270 lt/min | 270 lt/min |
| Relative capacity (free delivery at 6 bar) | 23 lt/min | 23 lt/min | 23 lt/min | 40 lt/min | 40 lt/min | 40 lt/min |
| Noise level | 81 dB | 81 dB | 81 dB | 81 dB | 81 dB | 81 dB |
| Temperature oil delivered | -10 +50°C | -10 +50°C | -10 +50°C | -10 +50°C | -10 +50°C | -10 +50°C |
| Max. viscosity oil delivered | 80 SAE | 80 SAE | 80 SAE | 130 SAE | 130 SAE | 130 SAE |
| Suitable for drums of | / | / | 180 - 220 kg | / | / | 180 - 220 kg |
| Weight | 4 kg | 4,5 kg | 6 kg | 5 kg | 5,5 kg | 6,5 kg |
| Suction tube length | / | / | 940 mm | / | / | 940 mm |
| Suction tube diameter | wall-mounted | / | 42 mm | wall-mounted | / | 42 mm |



Ratio **1:1**
Capacity **40 lt/min**



Art. 33160 Art. 33161 Art. 33194 Art. 33196

Air-operated transfer pumps 40 l/min suitable for transferring **low/medium viscosity** (density) liquids such as oil, depleted oil, antifreeze liquid and allied products **at short and medium distances**.

They are equipped with **special Teflon seals**.

Art. 33160 Transfer pump 40 l/min Ratio 1:1 for wall mounting (or fixed) **see page 66**

N° 1 packing m^3 0,010 kg 5,3

Art. 33161 Extensible pump 40 l/min Ratio 1:1 complete with foot valve with filter **KR3308** applicable to the personalized suction tube. **see page 66**

N° 1 packing m^3 0,010 kg 6

Art. 33194 Transfer pump 40 l/min Ratio 1:1 for 180/220 kg trade drums

N° 1 packing m^3 0,020 kg 7,3

Art. 33196 Transfer pump 40 l/min Ratio 1:1 for 180/220 kg trade drums with pump bung adaptor (art. 38042)

N° 1 packing m^3 0,020 kg 7,4

WARNING: Do not use flammable or corrosive liquids.

We recommend applying delivery hoses of min. 1/2", optimal 3/4".

N.B. The eventual application of a meter art.37701-37702-37711-37722 reduces the pump capacity to 13/15 litres max.

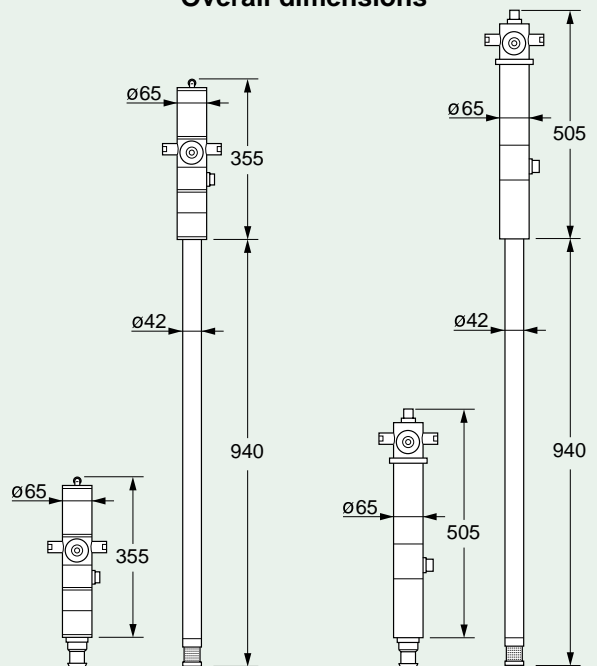
These pumps can only be coupled with meter 33701.

Single- and double-acting see page 50-51

Compression ratio see page 52

Relative and real capacity see page 53

Overall dimensions



art. 33060 - 33094

art. 33160 - 33194



MODULAR TRANSFER PUMPS

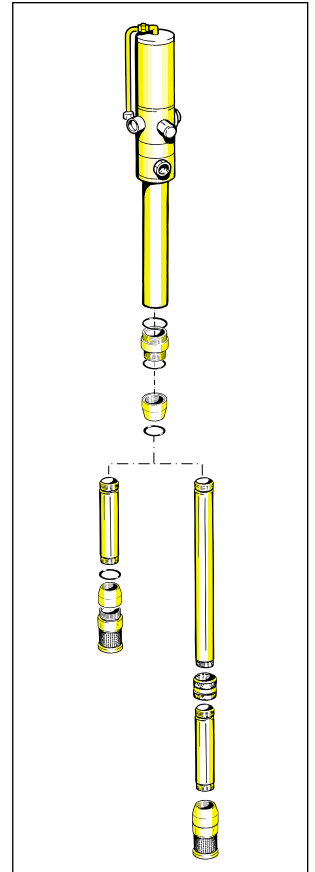
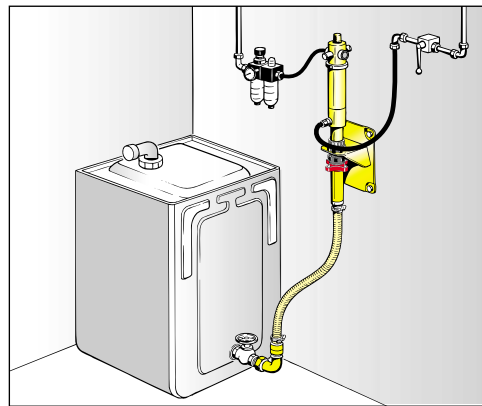
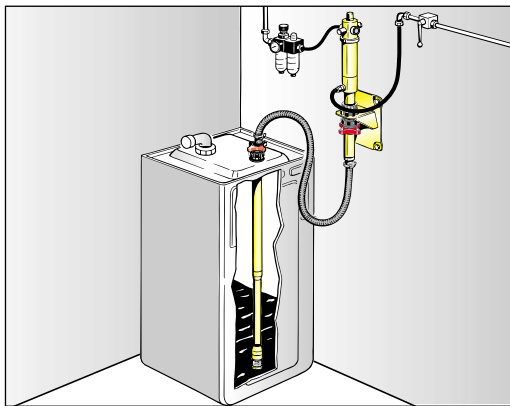


Art. 33060

Art. 33160

Wall-mounted pumps art.33060-33160 applied to wall or with fixed position with special accessories, offer a wide range of applications.
see page 60 - 70 - 71.

The same pumps, fitted with modular extensions, are arranged for a multitude of uses,
see page 92 - 93.



KR 3308

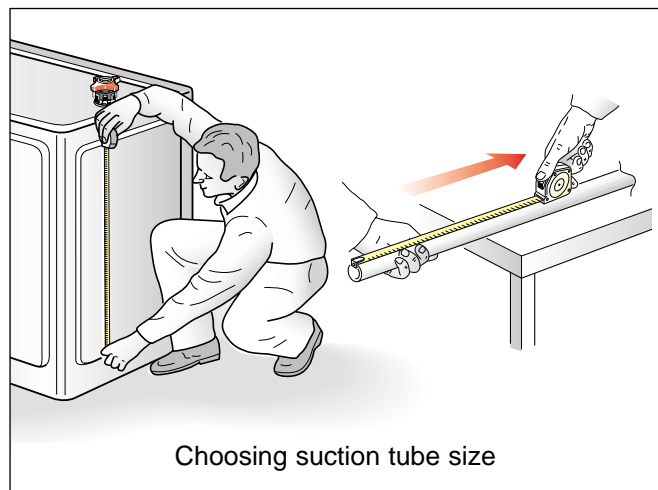
KR 3308

Art. 33061

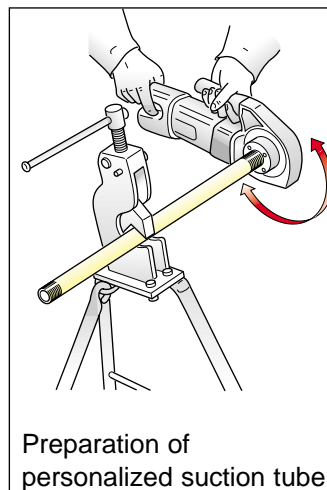
Art. 33161

The extensible pumps (Art. 33061 - 33161) can be fitted with personalized 1" suction tubes for use in tanks or drums of various sizes.

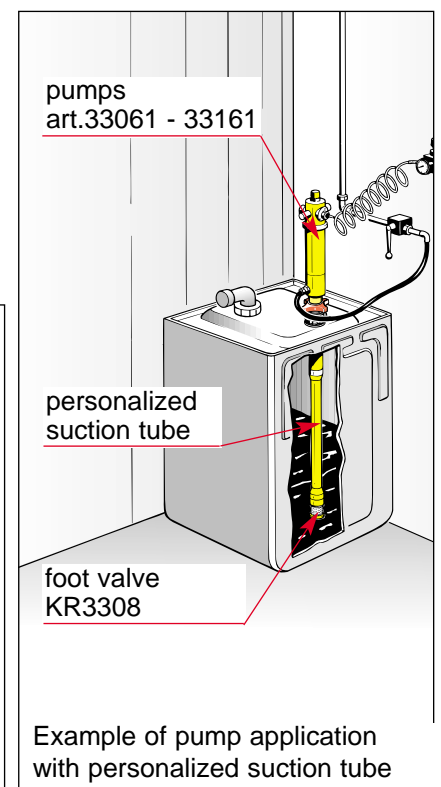
A pump with personalized suction tube can be obtained by threading at 1" G. the two ends of a water pipe of the desired length and applied between the pump and the foot valve (KR3308).



Choosing suction tube size



Preparation of personalized suction tube

pumps
art.33061 - 33161personalized
suction tubefoot valve
KR3308Example of pump application
with personalized suction tube