



# ENCLOSED HOSE REELS

Grease 600 bar



**FIXED S. 450**



**SWIVELLING S. 440**

Hose reel with hoses in black synthetic rubber and galvanised steel fittings

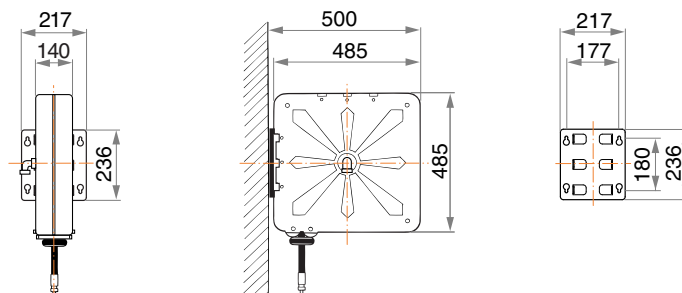
- carbon steel swivel joint
- "polyurethane" seals



Article	Hose length	Hose $\phi$	Connection inlet	Connection outlet
8450.500	/	without hose	F 3/8"G	F 1/2"G
8450.501	12m (993.512)	1/4"	F 3/8"G	M 1/4"G
8450.502	18m (993.518)	1/4"	F 3/8"G	M 1/4"G
8450.505	10m (995.710)	3/8"	F 3/8"G	M 1/4"G
8450.506	15m (995.715)	3/8"	F 3/8"G	M 1/4"G

No. 1 packing  $m^3$  0,085 from kg 21 to 29

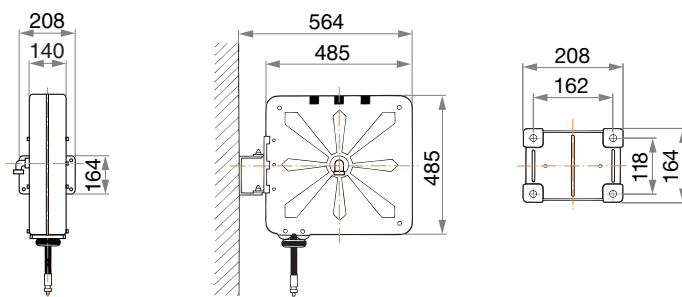
## OVERALL DIMENSIONS



8440.500	/	without hose	F 3/8"G	F 1/2"G
8440.501	12m (993.512)	1/4"	F 3/8"G	M 1/4"G
8440.502	18m (993.518)	1/4"	F 3/8"G	M 1/4"G
8440.505	10m (995.710)	3/8"	F 3/8"G	M 1/4"G
8440.506	15m (995.715)	3/8"	F 3/8"G	M 1/4"G

No. 1 packing  $m^3$  0,085 from kg 22 to 30

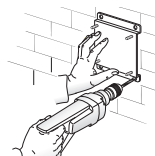
## OVERALL DIMENSIONS



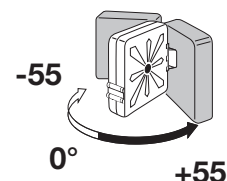
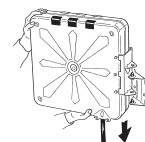
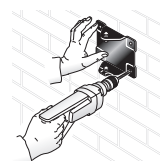
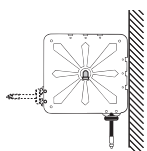
The **template** supplied, facilitates drilling of the holes and therefore hose reel fixing.



The **quick coupling** support (see page 394) that facilitates installation in battery is available by request.



The **fixed hose reel** installation system can be easily modified according to needs (see instructions on page 396).



The **quick coupling** adjustable support facilitates hose reel installation and enables 55° rotation to the right or left or locking in fixed positioned at 0° by means of clamping with two screws.

The **swivelling hose reel** installation system can be easily modified according to needs (see instructions on page 396).

