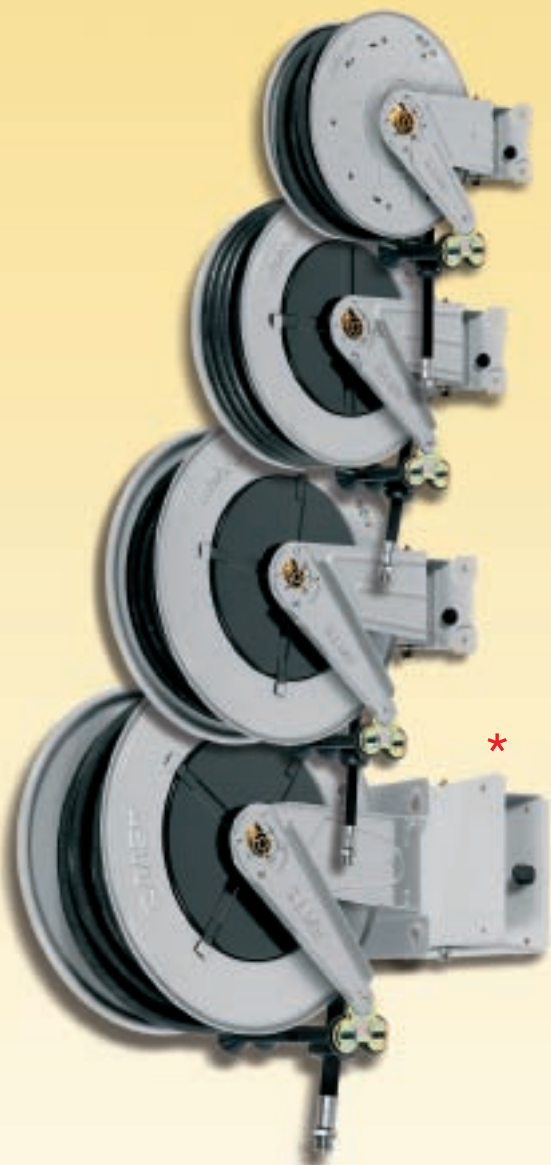




Oil and similar **150 bar**



S. 380

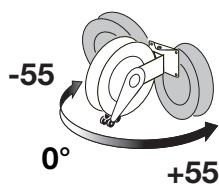
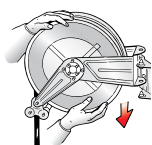
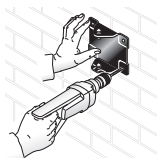
S. 420

S. 520

S. 550

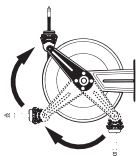
\* Adjustable support for hose reel S.540

The same models, fixed version, on page 370



The **quick coupling** adjustable support facilitates hose reel installation and enables 55° rotation to the right or left or locking in fixed positioned at 0° by means of clamping with two screws.

The **adjustable arms** can be easily repositioned according to needs (see page 396).



Hose reel with hoses in black synthetic rubber and galvanised steel fittings

- carbon steel swivel joint
- "polyurethane" seals



Article	Hose length	Hose ø	Connection inlet	Connection outlet
8380.400	/	without hose	F 1/2"G	F 3/8"-1/2"G
8380.401	12m (995.312)	3/8"	F 1/2"G	M 1/2"G
8380.402	17m (995.317)	3/8"	F 1/2"G	M 1/2"G

No. 1 packing  $m^3$  0,050 from kg 12 to 19

8420.400	/	without hose	F 1/2"G	F 1/2"G
8420.401	10m (996.310)	1/2"	F 1/2"G	M 1/2"G
8420.402	15m (996.315)	1/2"	F 1/2"G	M 1/2"G

No. 1 packing  $m^3$  0,065 from kg 15 to 25

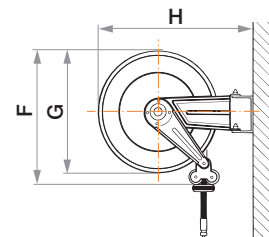
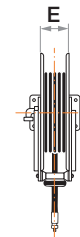
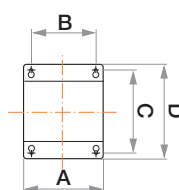
8520.400	/	without hose	F 1/2"G	F 1/2"G
8520.401	20m (996.320)	1/2"	F 1/2"G	M 1/2"G
8520.402	25m (996.325)	1/2"	F 1/2"G	M 1/2"G

No. 1 packing  $m^3$  0,065 from kg 20 to 43

8550.400	/	without hose	F 1"G	F 1"G
8550.401	15m (997.515)	3/4"	F 1"G	M 3/4"G
8550.402	20m (997.520)	3/4"	F 1"G	M 3/4"G
8550.403	15m (998.515)	1"	F 1"G	M 1"G
8550.405	/	without hose	F 1/2"G	F 1/2"G
8550.406	30m (996.330)	1/2"	F 1/2"G	M 1/2"G

No. 1 packing  $m^3$  0,120 from kg 25 to 41

## OVERALL DIMENSIONS



Art.	A	B	C	D	E	F	G	H
S. 380	184	146	106	144	110	400	ø 390	484
S. 420	208	162	118	164	115	460	ø 420	541
S. 520	228	182	154	200	115	560	ø 510	642
S. 550	300	218	226	268	190	560	ø 510	702