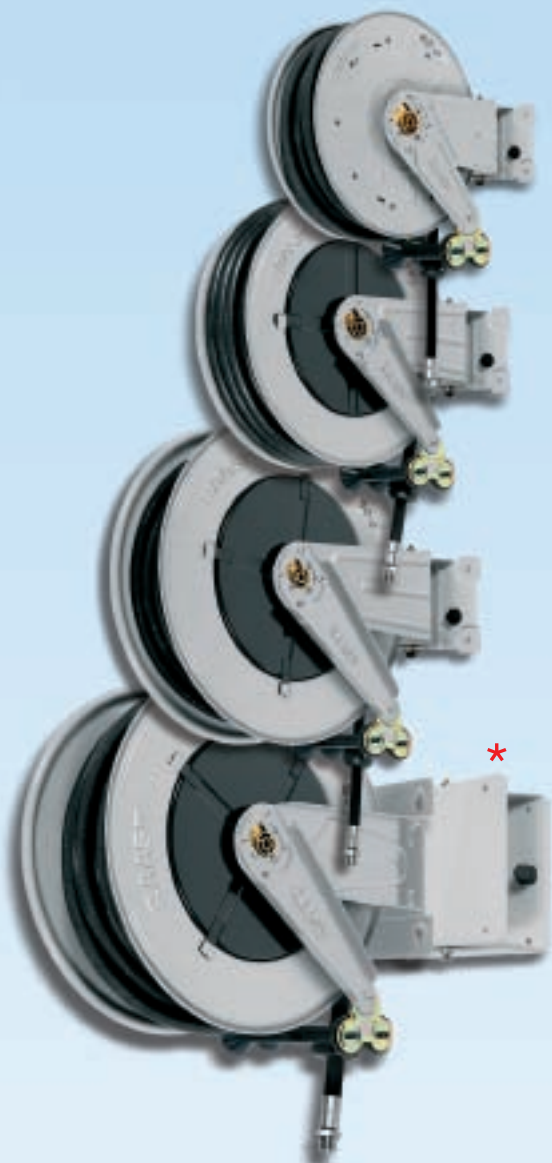




PAINTED SWIVELLING HOSE REELS

Air - water **20** bar



S. 380

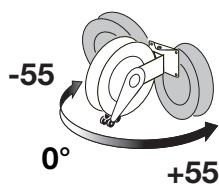
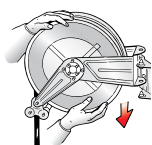
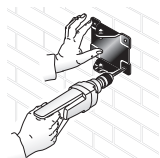
S. 420

S. 520

S. 550

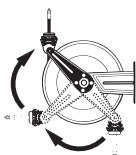
* Adjustable support for hose reel S.540

The same models, fixed version, on page 340



The quick coupling **adjustable support** facilitates hose reel installation and enables 55° rotation to the right or left and locking in fixed positioned at 0° by means of clamping with two screws.

The **adjustable arms** can be easily repositioned according to needs (see page 396).



Hose reel with hoses in black synthetic rubber and galvanised steel fittings

- brass swivel joint
- "viton" seals



Article	Hose length	Hose ø	Connection inlet	Connection outlet
8380.100	/	without hose	F 3/8"G	F 3/8"G
8380.101	12m (995.211)	3/8"	F 3/8"G	M 3/8"G
8380.102	18m (995.217)	3/8"	F 3/8"G	M 3/8"G

No. 1 packing m^3 0,050 from kg 12 to 19

8420.100	/	without hose	F 1/2"G	F 1/2"G
8420.101	12m (995.212)	3/8"	F 1/2"G	M 3/8"G
8420.102	18m (995.218)	3/8"	F 1/2"G	M 3/8"G
8420.103	10m (996.210)	1/2"	F 1/2"G	M 1/2"G
8420.104	15m (996.215)	1/2"	F 1/2"G	M 1/2"G

No. 1 packing m^3 0,065 from kg 15 to 25

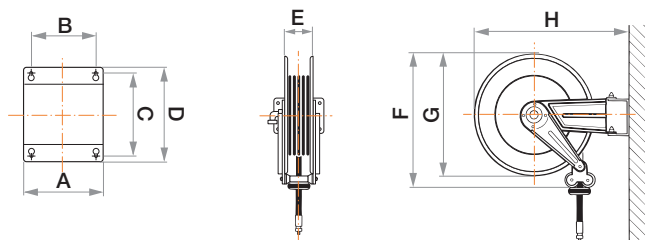
8520.100	/	without hose	F 1/2"G	F 1/2"G
8520.101	20m (996.220)	1/2"	F 1/2"G	M 1/2"G
8520.102	25m (996.225)	1/2"	F 1/2"G	M 1/2"G

No. 1 packing m^3 0,065 from kg 20 to 43

8550.100	/	without hose	F 1"G	F 1"G
8550.101	15m (997.215)	3/4"	F 1"G	M 3/4"G
8550.102	20m (997.220)	3/4"	F 1"G	M 3/4"G
8550.103	15m (998.215)	1"	F 1"G	M 1"G
8550.105	/	without hose	F 1/2"G	F 1/2"G
8550.106	30m (996.230)	1/2"	F 1/2"G	M 1/2"G

No. 1 packing m^3 0,120 from kg 25 to 41

OVERALL DIMENSIONS



Art.	A	B	C	D	E	F	G	H
S. 380	184	146	106	144	110	400	ø 390	484
S. 420	208	162	118	164	115	460	ø 420	541
S. 520	228	182	154	200	115	560	ø 510	642
S. 550	300	218	226	268	190	560	ø 510	702